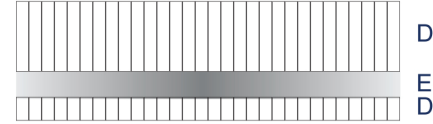
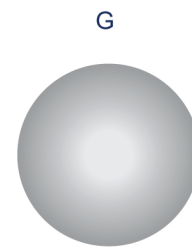
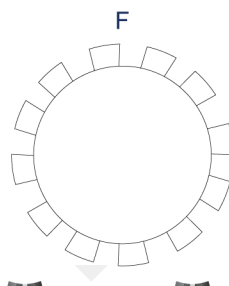




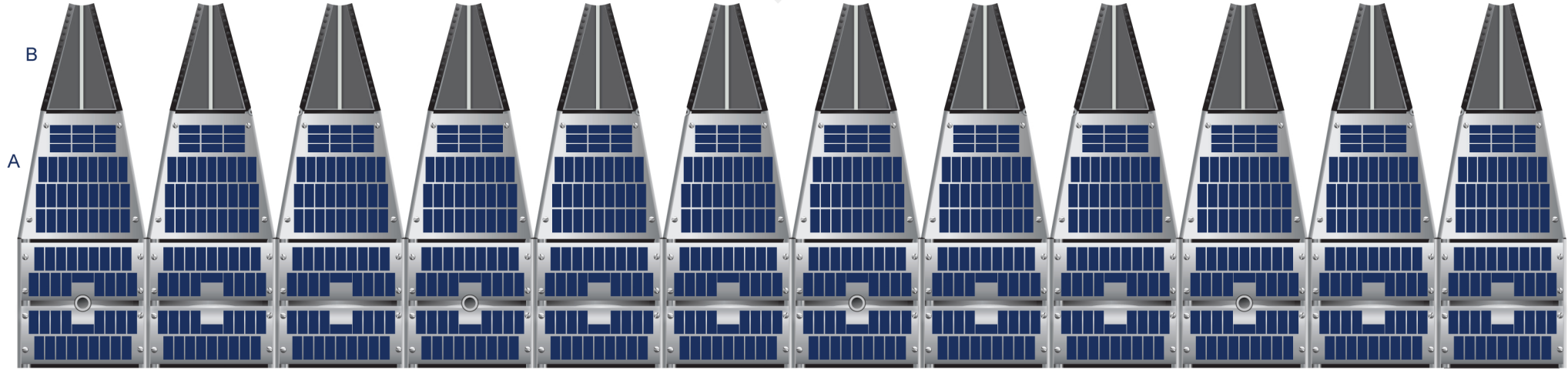
Government of Canada

Gouvernement du Canada

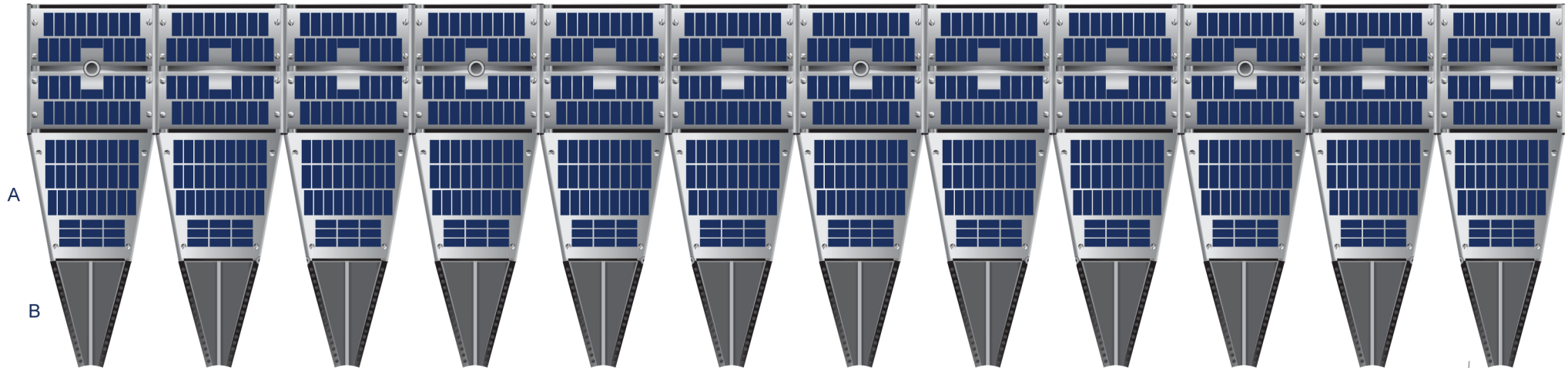
ALOUETTE 1



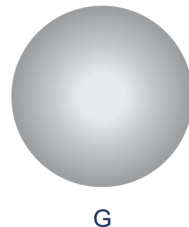
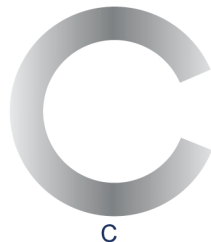
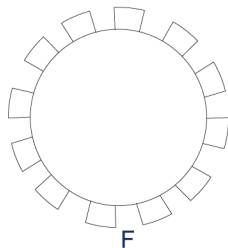
D
E
D



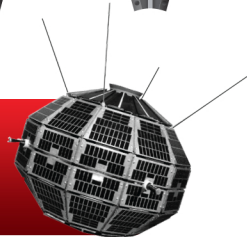
Section 1

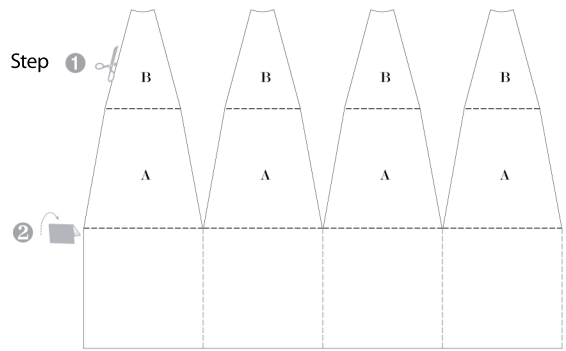


Section 2

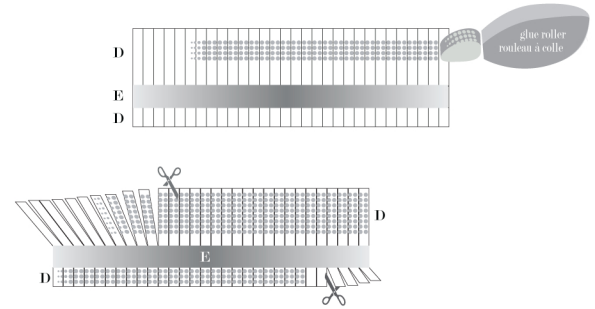
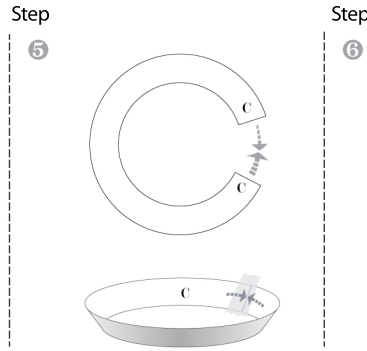
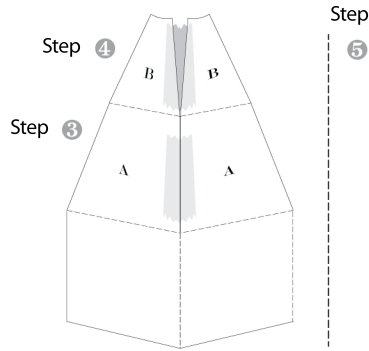


See assembly instructions on page 2

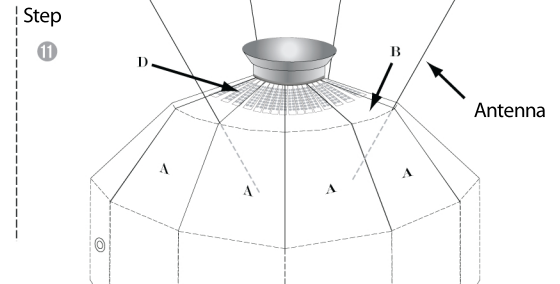
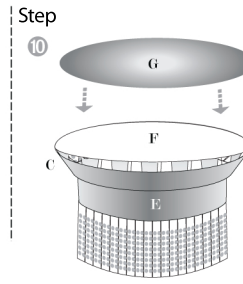
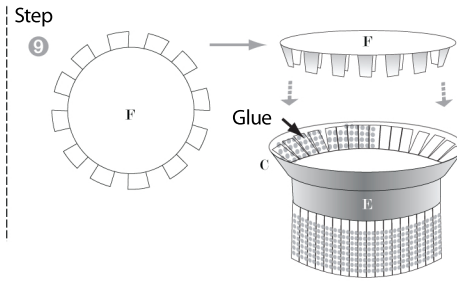
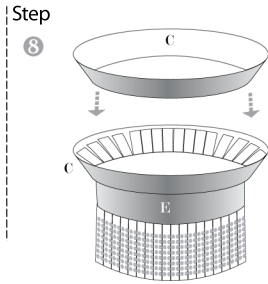
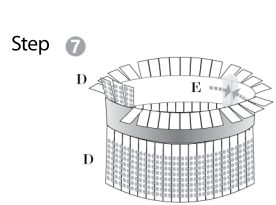




—— Cutting lines - - - - - Folding lines



glue roller
rouleau à colle



You will need:

▶ Two-sided tape or glue roller

▶ Sharp scissors

▶ 4 toothpicks, thin rigid wire or plastic

The model is made up of two identical sections. Do steps 1 to 11 for section 1. Do the same for section 2.

- 1 Cut on solid lines.
- 2 Score and then fold away from you on all folding lines.
- 3 Bring all A sides together to end up with a closed circumference. Fasten with transparent tape. Do not overlap sides.
- 4 Proceed to do the same with Bs.
- 5 Proceed to do the same with Cs, keeping white side as the inside face. Trim excess tape.
- 6 Use glue roller or double stick adhesive tape and cover D areas. Avoid putting glue on area E. Proceed to cut with sharp scissors along all cutting lines of Ds, up to E area.
- 7 Close in both ends of E like you did in step 5.
- 8 Slide part C over smaller end of part D and press to adhere D to G.
- 9 Fold extensions of part F. Unfold and add glue on part F. Add glue inside part C. Press down part F inside C.
- 10 Cut part G. Add glue on back of G. Paste over F.
- 11 Insert this cap inside the opening in top half of satellite and press D parts to inside B wall.
- 12 Proceed with the same steps for section 2.
- 13 Insert section 2 into section 1.
- 14 Add 4 antennas, first piercing a hole with a pin. Use toothpicks, thin rigid wire or plastic.